

# INVISIBLE TEARS

**Music:** Ann Williamson  
Cd: The Greatest Hits Collection  
<https://music.amazon.com/user-playlists/e77b77c6e82b485d86f826110f37ae72engb>  
Track # 29 Time 2:38 Available from choreographer

**Rhythm:** Foxtrot **Phase:** IV+2 (Nat. Hover Cross + Curved Feather)

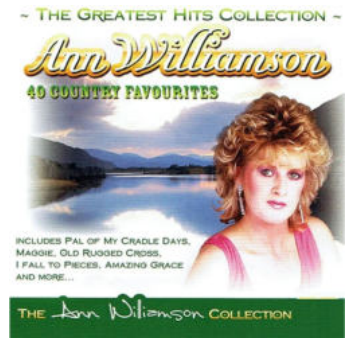
**Footwork:** Opposite except where (Noted)

**Release Date:** Oct 24

**Choreo:** Jos Dierickx Beverlosestwg 14B2 3583 Paal Belgium

**Email:** [jos.dierickx@telenet.be](mailto:jos.dierickx@telenet.be)

**Sequence:** INTRO AB A C B(1-14) END



## INTRO

### 01-04 CP DLC LEAD FOOT FREE WAIT 2 MEASURES ; ; SIDE SWAY LEFT & RIGHT ; DIP BACK & RECOVER ;

{**Wait**} CP DLC ld ft free wt 2 meas ; ; {**Sd Sway L & R**} [S&S&] Sd L incline body to L, tch R to L, sd R, incline body to R, tch L to R ; {**Dip Bk & Rec**} [SS] Bk L w/ flexed knee, -, rec R to CP DLC, -;

## PART A

### 01-04 DIAMOND TURN/W INSIDE TURNS ; ; ; ;

{**Diamond Trn /W Insd Trns**} Fwd L trng LF, -, compg ¼ LF trnsd R, bk L to BJO DRC ; Staying in BJO & trng LF bk R raisg ld hnds, -, compg ¼ LF trn sd L, fwd R (*W fwd L comm LF trn under jnd ld hnds fc RDC, -, small sd R cont LF trn, small sd L compg LF trn*) to BJO DRW ; Repeat meas 1,2 Part A to BJO DLW & DLC ;

### 05-08 REVERSE WAVE 3 to CHECK & WEAWE ; ; ; CHANGE of DIRECTION ;

{**Reverse Wave 3 to Check & Weave**} Fwd L comm LF trn, -, sd R trng LF (*W heel trn*), bk L twd DLW to CP DRC ; Check bk R, -, rec L, sd R trng 1/8 LF ; [QQQQ] Bk L w/ rt shldr ld to BJO trng 1/8 LF, bk R to CP contg to trn LF, sd & fwd L contg trn, fwd R to BJO DLW ; {**Chng of Direction**} [SS] Fwd L, -, fwd & sd R trng ¼ LF, draw L to CP DLC ;

### 09-12 CLOSED TELEMARK ; IN & OUT RUNS ; ; THRU VINE 4 ;

{**Closed Telemark**} Fwd L comm LF trn, -, fwd & sd R arnd W close to W's ft trng LF, fwd & sd L (*W bk R comm LF heel trn on R heel bringing L beside R w/ no wgt, -, cont LF trn on R heel & chg wgt to L, bk & sd R*) to BJO DLW ; {**In & Out Runs**} Trng RF Fwd R, -, sd & bk L to CP RLOD, bk R (*W bk L, -, bk R comm RF trn, fwd L*) to BJO RLOD ; Trng RF bk L, -, contg trn fwd R btwn W's ft, sd & fwd L (*W trng RF fwd R, -, cont trn sd L ifo M, cont trn fwd & sd R*) to SCP DLC ; {**Thru Vine 4**} [QQQQ] XRif (*W XLif*), sd L fcg ptr, XRib (*W XLif*), sd L to SCP LOD ;

### 13-16 OP NATURAL ; BACK TWISTY VINE 4 ; CLOSED IMPETUS ; FEATHER FINISH ;

{**OP Natural**} Thru R stg RF trn, -, contg RF trn sd L ifo W, bk R (*W fwd L, -, R, L*) to BJO RLOD ; {**Bk Twisty Vine 4**} (QQQQ) Bk L in BJO, sd R trng to fc ptr, fwd L in SCAR, sd & bk R trng to BJO DLC ; {**Closed Impetus**} Comm RF upper bdy trn bk L, -, heel trn on L & cl R, sd & bk L (*W comm RF upper bdy trn fwd R btw M's ft, -, sd & fwd L contg RF trn arnd M, brush R to L & fwd R btw M's ft*) to CP DLW ; {**Feather Finish**} Bk R, -, bk & sd L trng ¼ LF, fwd R to BJO DLC ;

## PART B

### 01-04 OP REVERSE TURN ; HOVER CORTE ; BACK HOVER to SCP ; SLOW SIDE LOCK ;

{**OP Reverse Trn**} Fwd L stg LF trn, -, sd R contg trn, bk L compg 3/8 LF trn (*W bk R stg LF trn, -, sd L cont trn, fwd R outsd ptr*) to BJO RLOD ; {**Hover Corte**} Bk R stg ½ LF trn, -, cont trn sd & fwd L risg & compg trn, rec R to BJO LOD ; {**Bk Hover to SCP**} Bk L, -, bk R risg sltly, rec L (*W fwd R, -, fwd & sd L trng RF risg & brushg R to L, contg RF trn sd & fwd R*) to SCP LOD ; {**Slow Sd Lock**} Thru R, -, sd & fwd L trn slighly LF to CP, cl R (*W thru L stg LF trn, -, sd & bk R cont LF trn to CP, XLif*) to CP DLC ;

### 05-08 TELEMARK to SCP ; CURVED FEATHER ; BACK CROSS HOVERS to SCAR BJO ; ;

{**Telemark to SCP**} Fwd L comm LF trn, -, sd R contg LF trn, sd & fwd L (*W bk R comm LF trn bringing L ft beside R w/ no wgt, -, cont trng LF on R heel & chg wgt to L, sd & sltly fwd R*) to SCP DLW ; {**Curved Feather**} Fwd R stg RF trn, -, cont RF trn sd & fwd L, cont upper bdy RF trn fwd R outsd W to BJO DRW ; {**Bk Cross Hovers to SCAR & BJO**} XLib (*W XRif*), -, sd & bk R rise, bk L to SCAR DRC ; XRib (*W XLif*), -, sd & bk L rise, bk R BJO DRW ;

## Page 2: Invisible Tears

### 09-12 BACK CROSS HOVER to SCAR ; FEATHER FINISH DLW ; HOVER TELE ; THRU VINE 4 ;

{**Bk Cross Hover to SCAR**} Repeat meas 7 Part B ; {**Feather Finish DLW**} Bk R, -, bk & sd L trng LF, fwd R to BJO DLW ; {**Hover Tele**} Fwd L, -, fwd & sd R rising & trng 1/8 RF, sd & fwd L to SCP DLW ; {**Thru Vine 4**} Repeat meas 12 Part A ;

### 13-16 THRU FACE BEHIND ; ROLL 3 to SCP ; NATURAL HOVER CROSS ; ;

{**Thru Fc Behind**} Thru R, -, sd L to fc ptr, XRib (*W XLib*) ; {**Roll 3 to SCP**} Start LF trn (*W RF*) sd & fwd L, -, small sd R cont LF trn, sd & fwd L cont LF trn to SCP LOD ; {**Natural Hover Cross**} [SQQ;QQQQ] Fwd R comm RF trn, -, sd L cont RF trn, sd R cont RF trn to fc DLC in SCAR (*W fwd L comm RF trn, -, fwd R cont RF trn, cont RF trn sd L*) ; Fwd L small step on toes, rec R, trng LF & blendg briefly to CP sd L, XRif to BJO DLC ;

## PART C

### 01-04 TURN LEFT & R CHASSE to BJO ; OP IMPETUS ; PROMENADE WEAVE ; ;

{**Trn Left & R Chasse to BJO**} [SQ&Q] Fwd L trng LF, -, twd LOD & risg progly sd R/cl L, bk R BJO DRC ; {**Impetus to SCP**} Bk L comm RF trn, -, cl R heel trn, fwd L (*W fwd R btw M's ft heel to toe pvt 1/2 RF, -, sd & fwd L cont trn arnd M brush R to L, fwd R*) to 1/2 OP LOD ; {**Promenade Weave**} [SQQ;QQQQ] Fwd R, -, fwd L stg LF trn, contg trn sd & bk R twd LOD ; Bk L, bk R DLC trng LF to CP, sd & fwd L DLW, fwd R (*W fwd L prepg for LF trn, -, sd & bk R trng LF to CP, cont trng on R then fwd & sd L to BJO LOD*) ; Fwd R, fwd L trng LF to CP, sd & bk R contg LF trn to fc COH, bk L) to BJO DLW ;

### 05-08 WHISK to 1/2 OP LOD ; OP IN & OUT RUNS ; ; CHAIR & SLIP ;

{**Whisk**} Fwd L, -, sd & fwd R, XLib (*W XRib*) to 1/2 OP LOD ; {**OP In & Out Runs**} Fwd R comm RF trn, -, sd & fwd L ifo W contg trn, sd & fwd R to 1/2 LOP LOD [w/trl arms out to sd] ; Fwd L, -, R, L (*W fwd R comm RF trn, -, sd & fwd L ifo M contg trn, fwd & sd R*) to 1/2 OP DLC [w/ld arms out to sd] ; {**Chair & Slip**} Ck thru R, -, rec L, trng LF bk R (*W ck thru L, -, rec R, swiv LF on R fwd L*) to CP DLC ;

## ENDING

### 01-02 THRU VINE 4 ; THRU & HIGH to CHAIR ;

{**Thru Vine 4**} Repeat meas 12 Part A ; {**Thru & High to Chair**} Strong fwd R, -, fwd L risng, fwd R in lunge action bendg knee ;