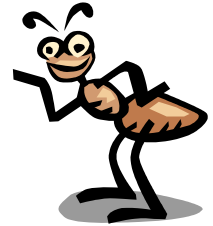


ANTS ON A LOG

Choreo : Randall Lewis (503) 645-9233 rel831@verizon.net
1596 N.W. Tanasbrook Ct. / Beaverton Oregon 97006-3261
Record : Ants On A Log - Randy Travis - CD Full Circle - Track 12 / Walmart.com \$.88
Phase : 2 Rhythm: Two Step Speed: as on download file
Footwork : Opposite Except where noted Release Oct 2006
Sequence : Intro , A (5-20) , B A , Br1 , B A , Br2 , A , End



Intro - BFLY / W - Wait two measures ; ; Twirl 2 ; Walk 2 SCP ;

1-2 In BFLY / W Wait two measures ; ;
3-4 Sd L, -, XRIBL, - ; Sd L, -, Thru R, - to SCP;

A - SCP - 2 Forward Twos ; ; face 2 Turning Twos ; ;

1-2 SCP - Fwd L, Cl R, Fwd L, - ; Fwd R, Cl L, Fwd R, - ; face CP / W
3-4 Sd L, Cl R, Sd L trng 1/2 RF, - ; Sd R, Cl L, Sd R trng 1/2 RF, - ;

Traveling Box ; ; ; BFLY

5 CP / W - Sd L, Cl R, Fwd L, - ; blend to Reverse SCP
6 towards RLOD Fwd R, - , Fwd L, - ; face CP / W
7 Sd R, Cl L, Bk R, - ; blend to SCP
8 Fwd L, - , Fwd R, - ; blend to BFLY

Face to Face ; Back to Back ; Basketball Turn ; ; Op / L

9 BFLY - Sd L, Cl R, Sd L release lead hands trng 1/2 LF (1/2 RF), - ;
10 Sd R, Cl L, Sd R trng 1/2 RF (1/2 LF), - ; BFLY
11-12 Sd L, - , Recover R to LOP / R, - ; Fwd L trng 1/2 RF (LF), - , Fwd R, - ; OP / L

Forward Lock Forward ; Twice ; Hitch 3 ; Hitch / Lady Scissor BJO ;

13-14 OP / L - Fwd L, Lock RIBL, Fwd L, - ; Fwd R, Lock LIBR, Fwd R, - ;
15 Fwd L, Cl R, Bk L, - ;
16 Bk R, Cl L, Fwd R, - ; (Bk L commence trng 1/2 LF to BJO,
Bk R finish trng LF to BJO, Bk L, - ;) BJO

Fishtail ; Walk Manuver ; Pivot 2 ; Twirl 2 ; CP / W

17 BJO - XLIBR, Sd R trng 1/4 RF, Fwd L, Lock RIBL ;
18 Fwd L, - , Fwd R trng 3/8 RF to CP / R, - ;
19 Bk L trng 3/8 RF to CP / DC, - , Fwd R trng 3/8 RF to CP / W, - ;
20 Sd L, - , XRIBL, - ; CP / W (Sd and fwd R twds LOD trng RF under jnd lead
hands, - , Sd and Bk L twds LOD trng RF to CP / W, - ;)

ANTS ON A LOG

page 2

B - CP / W - Full Box ; ; Slow Twist Vine 4 ; ; CP / W

- 1-2 CP / W - Sd L, Cl R, Fwd L, - ; Sd R, Cl L, Bk R, - ;
- 3-4 Sd L, - , XRIBL, - ; Sd L, - , XRIFL, - ; CP / W
(Sd R, - , XLIFR, - ; Sd R, - , XLIBR, - ;)

Left Turning Box ; ; ; BFLY

- 5-6 CP / W - Sd L, Cl R, Fwd L trng 1/4 LF, - ; Sd R, Cl L, Bk R trng 1/4 LF, - ;
- 7-8 Sd L, Cl R, Fwd L trng 1/4 LF, - ; Sd R, Cl L, Bk R trng 1/4 LF, - ; BFLY

Slow Open Vine 4 ; ; CP / W 2 Turning Twos ; ; BFLY

- 9 BFLY - Sd L, - , XRIBL releasing trail hands trng 1/4 RF (LF) to LOP / R, - ;
- 10 Bk and Sd L trng 1/4 LF (RF) BFLY, - , thru R blending to CP / W, - ;
- 11-12 Sd L, Cl R, Sd L trng 1/2 RF, - ; Sd R, Cl L, Sd R trng 1/2 RF, - ; BFLY

Vine 3 Touch ; Wrap ; Unwrap OP / L ; Back Hitch 3 ; SCP

- 13-14 BFLY - Sd L, XRIBL, Sd L, - ;
- 14 In Place R, L, R wrapping Lady LF under joined lead hands to face LOD, - ;
- 15 Small Sd L releasing trails hands unwrap Lady RF, Cl R, Sd L, - ; OP / L
- 16 Bk R, Cl L, Fwd R, - ; blending to SCP

Br 1 - CP / W - 2 Turning Twos ; ; Strolling Vine ; ; ; CP / W

- 1-2 CP / W - Sd L, Cl R, Sd L trng 1/2 RF, - ; Sd R, Cl L, Sd R trng 1/2 RF, - ;
- 3 Sd L, - , XRIBL, - (Sd R, - , XLIFR, -);
- 4 Sd L trng 1/8 LF, Cl R, Sd L trng 1/2 LF, - ; CP / COH
- 5 Sd R, - , XLIBR, - (Sd L, - , XRIFL, -);
- 6 Sd R trng 1/8 RF, Cl L, Sd R trng 1/2 RF, - ; CP / W

Br 2 - CP / W - Scissor SCAR ; Scissor BJO ; Hitch 6 ; ;

- 1 CP / W - Sd L trng 1/8 RF to SCAR, Cl R, Fwd L, - ;
- 2 Sd R trng 1/4 LF to BJO, Cl L, Fwd R, - ;
- 3-4 Fwd L, Cl R, Bk L, - ; Bk R, Cl L, Fwd R, - ; BJO

Walk Manuver ; Pivot 2 ; Basketball Turn ; ; SCP

- 1 BJO - Fwd L, - , Fwd R trng 3/8 RF to CP / R, - ;
- 2 Bk L trng RF to CP / DC, - , Fwd R trng RF to CP / W, - ;
- 3-4 Sd L, - , Recover R to LOP / R, - ; Fwd L trng 1/2 RF, - , Fwd R, - ; SCP

End - CP / W - 2 Turning Twos ; ; Slow Open Vine 4 ;

- 1-2 CP / W - Sd L, Cl R, Sd L trng 1/2 RF, - ; Sd R, Cl L, Sd R trng 1/2 RF, - ;
- 3 BFLY - Sd L, - , XRIBL releasing trail hands trng 1/4 RF (LF) to LOP / R, - ;
- 4 Bk and Sd L trng 1/4 LF (RF), - , thru R to face, - ;

Apart Point ;

- 5 Apart L, - , Point R, - ;