

COLD WIND FIELD (Hladan Vjetar Poljem Piri)

Music: Djelo Jusic (Kroatia)
[iTunes/Rendez-Vous In Dubrovnik](#)
Track # 14 Time 2:37 Available from choreographer

Rhythm: Waltz **Phase:** III+1 (Develope) +1U (Interrupted Box)

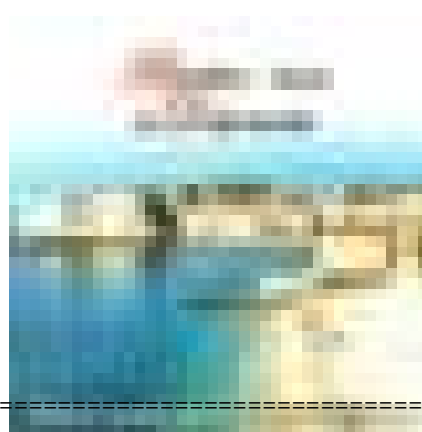
Footwork: Opposite except where (Noted)

Release Date: Oct 18

Choreo: Jos Dierickx Beverlosestwg 14b2 3583 Paal Belgium

Email: jos.dierickx@telenet.be

Sequence: INTRO AB AB(1-16) AB(1-13) END



INTRO

01-04 BFLY POS WALL LEAD FOOT FREE WAIT 2 MEASURES ; ; BALANCE L & R ; ;

{Wait} IN BFLY POS WALL Id ft free wt 2 meas ; ; {Balance L & R} Sd L, XRib (W XLib), rec L ; Sd R, XLib (W XRib), rec R ;

PART A

01-04 TWIRL VINE ; THRU TWINKLE TWICE to 1/2 OP LOD ; ; M ROLL ACROSS ;

{Twirl Vine} Sd L, XRib, sd L (W full RF trn undr jnd Id hnds fwd R, sd & bk L, fwd R) to SCP LOD ; {Thru Twinkle x 2} Thru R twd LOD, sd L trng RF, cl R ; Thru L twd RLOD, sd R trng LF, cl L to ½ OP LOD ; {M Roll Across} Fwd R begin RF trn, sd & fwd L XIF of W cont trn, sd & fwd R to ½ LOP LOD w/ free arms out to sd (W Fwd R, L, R) ;

05-08 W ROLL ACROSS ; MANEUVER ; SPIN TURN ; ½ BACK BOX ;

{W Roll Across} Fwd L, R, L (W fwd R begin RF trn, sd & fwd L XIF of M cont trn, fwd & sd R) to ½ OP DLC w/ free arms out to sd ; {Maneuver} Trng RF fwd R in frnt of W, sd L cont trn, cl R (W fwd L, R, L) to CP RLOD ; {Spin Turn} Stg RF upper bdy trn bk L pvtg ½ RF to fc LOD, fwd R btwn W's ft heel to toe cont trn leavg L leg xtnd bk & sd, rec L (W stg RF upper bdy trn fwd R btwn M's ft heel to toe pvtg ½ RF, bk L cont trn brush R to L, fwd R btwn M's ft) to CP DLW ; {Half Bk Box} Bk R, sd L trng 1/8 LF, cl R to CP LOD ;

PART B

01-04 INTERRUPTED BOX ; ; ; ;

{Interrupted Box} Fwd L, sd R, cl L ; Raisg jnd Id hnds bk R, sd L, cl R (W undr raised Id arms circ CW ½ L, R, L) ; Fwd L, sd R, cl L (W cont circg CW undr raised Id arms R, L, R) to CP LOD ; Bk R, sd L, cl R to CP LOD ;

05-08 TWO LEFT TURNS ; ; HOVER ; THRU CHASSE to SCP ;

{2 Left Turns} Fwd L stg LF trn, sd R contg LF trn, cl L ; Contg LF trn bk R, sd L contg LF trn, cl R to CP WALL ; {Hover} Fwd L, sd & fwd R rising, sd & fwd L (Bk R, sd & bk L rising, sd & fwd R) to SCP LOD ; {Thru Chasse to SCP} [12&3] Thru R, sd to fc prtn L/cl R, fwd L to SCP LOD ;

09-12 THRU HOVER to BJO ; BACK HOVER to SCP ; MANEUVER ; BACK BACK/LOCK BACK ;

{Thru Hover to BJO} Thru R, fwd L risg slightly, rec R (W thru L, fwd & sd R trng LF risg & brushg L to R, contg LF trn fwd L) to BJO DLW ; {Bk Hover to SCP} Bk L, bk & sd R w/ rise & slight LF trn, rec fwd L (W fwd R, fwd & sd L trng RF to CP, fwd R) to SCP LOD ; {Maneuver} Repeat meas 6 Part A ; {Bk Bk/Lk Bk} (12&3) Bk L, bk R/lk Lif, bk R to BJO ;

13-16 IMPETUS to SCP ; THRU SIDE BEHIND ; ROLL 3 to SCP ; THRU FACE CLOSE to BFLY ;

{Impetus to SCP} Bk L w/ RF bdy trn, cl R [heel trn] contg RF trn, fwd L (W fwd R outsd ptr pvtg RF, sd & fwd L contg RF trn arnd M, brush R & fwd R) to SCP DLC ; {Thru Sd Behind} Thru R, sd L to fc prtn, XRib (W XLib) ; {Roll 3 to SCP} Start LF trn (W RF) sd & fwd L, small sd R cont LF trn, sd & fwd L cont LF trn to SCP LOD ; {Thru Fc Cl} Thru R, sd L turn to fc, cl R to BFLY WALL ;

17 ONE CANTER ;

{One Canter} In BLFY Sd L, draw R, cl R to BFLY WALL ;

ENDING

01-04 PICK UP to SCAR ; FWD CHECK/W DEVELOPE ; OUTSIDE CHECK to BJO ; BACK X-HOVER to SCAR & HOLD ;

{Pick Up to SCAR} Trng to fc LOD fwd R, sm fwd L to fc DLW, cl R (*W trng LF fwd L, sd R Xg in front of ptr, cl L*) to SCAR DLW ; **{Fwd Check/W Develope}** [1--] Fwd L out L-sd W checking, -, - (*W bk R, bring L ft up R leg to insd of R knee, extend L ft fwd*) to BJO DLW ; **{Outsd Check}** Bk R trng LF, sd & fwd L, checkg fwd R to BJO DLC ; **{Bk Cross Hovers to SCAR}** XLib (*W XRif*), sd & bk R rise, bk L w/ bending knee to SCAR DLW & Hold ;