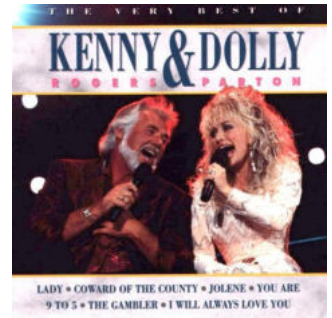


COWARD OF THE COUNTY

Music: Kenny Rogers
www.amazon.fr/Very-Kenny-Rogers-Dolly-Parton/dp/B077YJ6W92
Track # 9 Time 4:18 Shortened & Slowed Down w/ -5% to Time 2:51
Available from choreographer

Rhythm: Two Step Phase: III
Footwork: Opposite except where (Noted)
Release Date: Feb 22
Choreo: Jos Dierickx Beverlosestwg 14b2 3583 Paal Belgium
Email: jos.dierickx@telenet.be
Sequence: INTRO AB AB AB(1-19) END



INTRO

01-04 BFLY POS WALL LEAD FOOT FREE WAIT 2 MEASURES ; ; APART POINT ; TOGETHER TOUCH to SCP ;
{Wait} Bfly Pos Wall ld ft free wt 2 meas ; ; {Apt & Pt} Apt L, -, pt R twd ptr, -; {Together & Tch to SCP LOD} Tog R to SCP LOD, -, tch L to SCP LOD, -;

PART A

01-05 TWO FORWARD TWO'S Checkg ; ; CUT BACK TWICE ; DIP BACK & RECOVER ; WALK TWO to SCP ;
{2 Fwd Two's Checkg} Fwd L, cl R, fwd L, -; Fwd R, cl L, fwd R checkg, -; {Cut Bk x 2} [QQQQ] XLif (WXRif), bk R, XLif (WXRif), bk R; {Dip Bk & Rec to Fc} [SS] Rk bk L lowerg into soft knee, -, rec R trng to CP LOD, -; {Walk 2 to SCP} [SS] Fwd L, -, R (Wbk R, -, L trng LF) to SCP LOD, -;

06-10 TWO TURNING TWO'S ; ; SLOW OP VINE 4 ; ; SIDE & THRU ;
{2 Trng Two's} Sd L stg RF trn, cl R, bk L compg 1/2 RF trn, -; Sd R contg RF trn, cl L, fwd R contg RF trn to BFLY WALL, -; {Slow OP Vine 4} [SS;SS] Relsg trl hnds] Sd L, -, XRib (WXLif) to LOP RLOD, -; Trng to fc sd & fwd L, -, XRif (WXLif) to BFLY WALL, -; {Sd & Thru } [SS] Sd L, -, thru R trng LF to BFLY WALL, -;

11-15 VINE 2 FACE to FACE ; ; VINE 2 BACK to BACK ; ; PIVOT 2 to CP WALL ;
{Vine 2 Fc to Fc} [SS] Sd L, -, XRib (WXLif), -; Sd L, cl R, trng 3/8 LF, sd & fwd L to almost BK-TO-BK, -; {Vine 2 Bk to Bk} [SS] Sd R, -, XLib (XRib), -; Sd R, cl L, trng 3/8 RF sd & fwd R to CP WALL, -; {Pivot 2 to CP WALL} Fwd & sd L comm a RF pivot, -, fwd & sd R cont RF trn to CP WALL, -;

16-20 SCISSORS SCAR & BJO Checkg ; ; FISHTAIL ; WALK & FACE to BFLY ; TWIRL / VINE 2 to Bfly ;
{Scissors SCAR & BJO Ckg} Sd L, cl R, XRif to SCAR, -; Sd R, cl L, XLif to BJO, Chkg ; {Fishtail} [QQQQ] XLib, sd R, sd & fwd L, lk Rib ; {Walk & Fc to Bfly} [SS] Fwd L, -, fwd R trng 1/4 RF to BFLY WALL, -; {Twirl / Vine 2 to Bfly} [SS] Raisg jnd ld hnds sd L, -, XRib (W twrl RF under ld hnds R, -, L) to Bfly Wall, -;

PART B

01-04 FACE to FACE & BACK to BACK TWICE ; ; ; ;
{Face to Face & Back to Back x 2} Sd L, cl R, sd L trn LF 1/2 to BK-TO-BK, -; Sd R, cl L, sd R trng RF 3/8 to BFLY, -; Repeat meas 1,2 Part B ; ;

05-08 TRAVELING BOX ; ; ; ;
{Traveling Box} Sd L, cl R, fwd L, -; [SS] Sd R, -, thru L to loose RSCP RLOD, -; Trng to fc sd R, cl L, bk R, -; [SS] Sd L, -, thru R to BFLY WALL, -;

09-12 STROLLING VINE ; ; ; ;
{Strolling Vine} [SS] Sd L, -, XRib (WXLif), -; Sd L, cl R, sd L trng 1/2 LF to COH, -; [SS] Sd R, -, XLib (WXRif), -; Sd R, -, cl L, sd R trng 1/2 RF to BFLY WALL, -;

13-16 TRAVELING DOORS ; ; ; ;
{Traveling Doors} [SS] Rk sd L, -, rec R, -; XLif (WXRif), sd R, XLif (WXRif), -; [SS] Rk sd R, -, rec L, -; XRif (WXLif), sd L, XRif (WXLif) to CP WALL, -;

17-20 TWO TURNING TWO'S ; ; TWIRL / VINE 2 ; WALK 2 to SCP LOD ;
{2 Trng Two's} Repeat meas 6,7 Part A ; ; {Twirl / Vine 2} Repeat meas 20 Part A to SCP LOD ; {Walk 2 to SCP LOD} [SS] Fwd L, -, R (W fwd R, -, L) to SCP LOD, -;

ENDING

01 STEP APART & POINT to PARTNER ;
{Apart & Point twd Ptr} Relg ld hnds to OP FCG Apt L, -, pt R twd ptr, -;