

DARIJA 5

Music: Prandi Sound
www.wrdmusic.com/chrisanne-original-hits-for-dancing
The Chrisanne Collection 4 Vol 4 Track # 2 Time 4:37
Cut Music 3.529 to the end & 2.010 to 2.355 to Time 3:19
Available from Choreographer

Rhythm: Waltz **Phase :** V

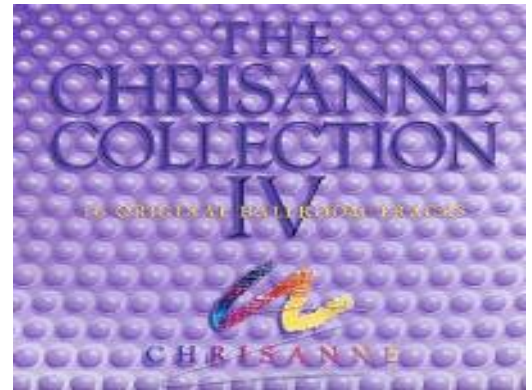
Footwork: Opposite except where (Noted)

Release Date : Feb 20

Choreo: Jos Dierickx Beverlosestwg 14B2 3583 Paal Belgium

E-mail: jos.dierickx@telenet.be

Sequence: INTRO AB BRIDGE AB(1-19) END



INTRO

01-02 CP DLC LD FT FREE WAIT 2 MEAS ; ;
{Wait} CP DLC ld ft free wt 2 meas ; ;

PART A

01-04 OP REVERSE TURN ; HOVER CORTE ; BACK WHISK ; THRU SYNCOPATED VINE :
{OP Rev Trn} Fwd L com LF trn, trng LF sd R, bk L compg 3/8 LF trn (*W bk R stg LF trn, cont trn sd L, fwd R outsd ptr*) to BJO RLOD ; {Hover Corte} Bk R, trng LF sd & fwd L LOD leavg R leg in pl, compg 1/2 LF trn rec R (*W fwd L, trng LF sd & fwd R & brush L to R, fwd L*) to BJO DLW ; {Bk Whisk} Bk L, bk & sd R, XLib (*W Fwd R, fwd & sd L trng 1/2 RF, XRib*) to SCP LOD ; {Thru Syncop Vine } [1,2&3] Thru R, sd L trng RF to fc ptr/XRib (*W XLib*), sd L to SCP LOD ;

05-08 IN & OUT RUNS ; ; SLOW SIDE LOCK ; CLOSED TELEMARQUE :
{In & Out Runs} Trng RF fwd R, sd & bk L to CP RLOD, bk R (*W fwd L, fwd R betwn M's ft, fwd L*) to BJO RLOD ; Trng RF bk L, cont trn fwd R betwn W's ft, sd & fwd L (*W trng RF fwd R, cont trn sd L ifo M, cont trn fwd & sd R*) to SCP LOD ; {Slow Sd Lock} Thru R, fwd & sd L rising trng LF, cl R (*W Thru L trng LF, sd R trng LF, lk Lif*) to CP DLC ; {Closed Telemarque} Fwd L start LF turn, fwd & sd R, sd & fwd L (*W bk R, trng LF on R cl L [heel trn], bk & sd R*) to BJO DLW ;

09-12 MANUEVER PIVOT 2 ; PIVOT 3 to SCP ; QUICK OP REVERSE ; BACK & CHASSE to BJO ;
{Manuever Pivot 2} Fwd R begin trn RF, trn 1/2 RF sd L pvt action, fwd R pvt 1/2 RF ; {Pivot 3 to SCP} Bk L pivot 1/2 RF, fwd R heel lead betwn W's feet cont RF trn rise & stretch r-sd, sd & fwd L to SCP LOD ; {Qk OP Reverse} [1,2&3] Fwd R, fwd L com LF trn/trng LF sd R, bk L compg 3/8 LF trn (*W fwd L, bk R stg LF trn/cont trn sd L, fwd R outsd ptr*) to BJO RLOD ; {Bk Chasse to BJO} [1,2&3] Bk R trng LF, cont trn sd L/cl R, cont trn sd & fwd L to BJO DLW ;

13-16 NATURAL WEAVE ; ; OP NATURAL ; HESITATION CHANGE :
{Nat Weave} Fwd R trng RF, sd L, bk R to BJO DRW ; Bk L, bk R in CP trng LF, cont LF trn fwd L to BJO DLW ; {OP Natural} Fwd R stg RF trn, cont trn sd & bk L, bk R w/ r-sd ld (*W bk L trng RF, fwd R betwn M's feet, fwd L*) to BJO DRC ; {Hesitation Chng} [1,2] Trng upper bdy RF bk L, sd R contg RF trn, draw L to CP DLC ;

PART B

01-04 TELEMARQUE to SCP ; NAT HOVER FALLAWAY ; CHECK BACK & REC to WHIPLASH BJO ; OUTSIDE CHANGE to SCP ;
{Telemarque to SCP} Fwd L comm LF trn, sd R w/ a strong LF trn, sd & slightly fwd L (*W bk R comm LF trn, cl L [heel trn], sd & slightly fwd R*) to SCP DLW ; {Nat Hover Fallaway} Fwd R, fwd L risg & trng RF, rec R (*W fwd L, fwd R, rec L*) to SCP DRW ; {Check Bk & Rec to Whiplash BJO} [1,2] Bk L in fallaway chckg, thru R no rise pnt L to DRW trn body LF to swivel lady to BJO (*W bk R fallaway ck, thru L swivel LF ronde R CCW to BJO*) to BJO DRW, - ; {Outsd Chng to SCP} Trng LF bk L, bk & sd R cont LF trn, sd & fwd L (*W fwd R, L, R*) to SCP LOD ;

05-08 WEAVE SIX to BJO ; ; FWD FWD/LOCK FWD ; OP NATURAL ;

{Weave 6 to BJO} Fwd R DLC, fwd L stg LF trn, contg trn sd & bk R to fc DRC (*W fwd L trng LF, sd & bk R to CP, contg LF trn sd & fwd L LOD to BJO*) ; Bk L LOD, bk R trng LF trn, sd & fwd L (*W fwd R outsd ptr, fwd L to CP contg LF trn, sd & bk R*) to BJO DLW ; **{Fwd Fwd/Lock Fwd}** [1,2&3] Fwd R to BJO DLW, fwd L/lk Rib, fwd L ; **{OP Natural}** Repeat meas 15 Part A ;

09-12 OUTSIDE SPIN & RIGHT TURNING LOCK to SCP ; ; THRU CHASSE to SCP ; SLOW SIDE LOCK ;

{Outsd Spin & Right Trng Lock to SCP} Trn body RF toe in bk L small stp, fwd R cont trn outsd ptr, sd & bk L to CP DRC (*W Trn body RF fwd R outsd ptr, cl L cont trn, fwd R CP*) to DRW ; {1&2,3} Bk R DW w/ rt-sd lead comm to trn R/XLif fc COH, cont R trn sd & fwd R betwn W's ft, fwd L (*W Fwd L w/ lft-sd lead comm to trn RF/XRib, fwd & sd L cont trng R, fwd R to SCP*) to SCP LOD ; **{Thru Chasse to SCP}** [1,2&3] Thru R, sd to fc ptr L/cl R, fwd L to SCP LOD ; **{Slow Sd Lock}** Repeat meas 7 Part A ;

13-16 DIAMOND TURN HALF ; ; QUICK DIAMOND 4 ; DIP BACK & REC ;

{Diam Trn ½} Fwd L trng LF, compg ¼ LF trn sd R, bk L to BJO ; Staying in BJO & trng LF bk R, compg ¼ LF trn sd L, fwd R ; **{Qk Diamond 4}** [1,2&3] Fwd L stg to trn LF, sd R contg LF trn, bk L compg ¼ LF trn to BJO DLW, bk R to CP LOD ; **{Dip Bk & Rec}** [1,2] Bk L w/ flexed knee, -, rec R to CP LOD, - ;

17-20 VIENNESE TURNS ; ; HOVER TELE ; CHAIR & SLIP ;

{Viennese Trns} Fwd L stg LF trn, sd R cont trn, lk Lif to fc RLOD (*W bk R stg LF trn, sd L cont trn, cl R*) ; Bk R cont LF trn, sd L cont trn, cl R (*W fwd L cont LF trn, sd R cont trn, lk Lif*) to CP DLW ; **{Hover Tele}** Fwd L, fwd & sd R rising & trng 1/8 RF, sd & fwd L to SCP LOD ; **{Chair & Slip}** Thru R, rec L [no rise], w/ slight LF upper bdy trn slp R bhd L cont trn (*W thru L, rec R [no rise], swvl LF on R & stp fwd L outsd M's R ft*) to CP DLC ;

BRIDGE

01-02 SLOW SIDE SWAY L & R ; ;

{Slow Sd Sway L & R} [1-] Slow Sd L, sway L, - ; [1-] Slow Sd R, sway R, - ;

ENDING

1 CHAIR & HOLD ;

{Chair} [1] Thru R relax R knee both fwd poise, hold as music fades, - ;