

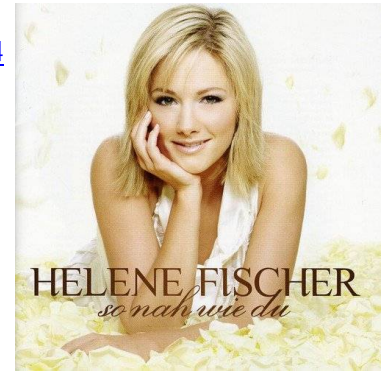
HINTER DEN TRÄNEN [Behind The Tears]

Music: Helene Fischer
<https://www.amazon.de/So-Nah-Wie-Helene-Fischer/dp/B000R9SDE4>
Cd : So Nah Wie Du Track # 5 Time 3:40
Available from choreographer

Rhythm: **Slow Two Step** Phase: **IV+1 (Triple Traveler) + SEVERAL U**
(*The Square + Trav.Right Turn + Passing X-Chasse + Turn Into Romantic Sway's*)

Footwork: **Opposite except where (Noted)**

Release Date: Dec 20
Choreo: Jos Dierickx Beverlosestwg 14b2 3583 Paal Belgium
E-mail: jos.dierickx@telenet.be
Sequence: **INTRO AB(1-14) INTRO(5-8) AB C B B(13-16) END**



INTRO

01-04 ½ OP LOD LEAD FOOT FREE WAIT 2 MEASURES ; ; OP BASICS ; ;

{**Wait**} ½ OP LOD ld ft free wt 2 meas ; ; {**OP Basic x 2**} Sd L trng to ½ RF rlsng trl-hnds LOP RLOD, -, XRib (*W XLib*), rec L trng to fc ptr ; Sd R trng to ½ LF rlsng ld-hnds OP LOD, -, XLib (*XRib*) rec R to ½ OP LOD ;

05-08 THE SQUARE ; ; ; ;

{**The Square**} Like a switch M fwd L Xifo W & swvl RF ¾ fc COH, -, fwd R, fwd L (*W sm fwd R & trn LF ¼ fc COH, -, fwd L, fwd R*) ; M sm fwd R trn LF ¼ fc RLOD, -, fwd L, fwd R (*W fwd L Xifo M & swvl RF ¾ fc RLOD, -, fwd R, fwd L*) ; M fwd L Xifo W & swvl RF ¾ fc WALL, -, fwd R, fwd L (*W sm fwd R & trn LF ¼ fc WALL, -, fwd L, fwd R*) ; M sm fwd R & trn LF ¼ fc LOD, -, fwd L, fwd R (*W fwd L Xifo M & swvl RF ¾ fc LOD, -, fwd R, fwd L*) to ½ OP LOD ;

PART A

01-04 LUNGE BASICS to Manvr ; ; TRAVELING RIGHT TURN w/ ZIG ZAG to Manuver ; ;

{**Lunge Basics & Manvr**} Sd L in Bfly w/ flex knee, -, rec R, XLif (*XRif*) to BFLY WALL ; Sd R in Bfly w/ flex knee, -, rec L, XRif (*W XLif*) to BFLY WALL & Manuver ; {**Traveling Right Trn to Zig Zag & Manvr**} Comm RF trn X-ifo W sd & bk L to fcg RLOD, -, XRib, twist trn RF 5/8 on both feet shifting weight to L to CP DLW (*W fwd R btwn M's feet, -, fwd L curvg RF around M, fwd R curvg RF to CP*) ; Fwd R DLW trng 1/8 RF, sd L trng 1/8 RF, bk R fcg DRW & Manuver ;

05-08 RIGHT TURN w/ OUTSIDE ROLL ; OP BREAK to FACE ; CHANGE SIDES/W UNDERARM ; OP BASIC ENDING ;

{**Right Turn w/ Outsd Roll**} Sd & bk L Xg ifo W, -, raisg jnd ld hnds to ld W's RF trn sd & bk R trng ¼ RF, XLif (*W fwd R com RF twrl undr ld hnds, -, fwd L contg to trn, fwd & sd R contg to trn to fc ptr*) to Low Bfly WALL ; {**OP Break to Fc**} [releasg ld hnds] Sd R, -, apt L raisg ld hnds to sd, rec R to W's rt shldr ; {**Change Sides /W Underarm**} [Raisg ld hnds & rlsng trl hnds] Fwd L COH trng RF chg sds lead W trn under ld hnds, -, sd R, XLif (*W fwd R WALL LF trn under ld hnds chg sds, -, sd L, XRif*) to BLFY WALL ; {**OP Basic Ending**} Sd R trng to ½ LF rlsng ld hnds OP LOD, -, XLib (*XRib*), rec R to ½ OP LOD ;

09-12 TWO SWITCHES ; ; SIDE BASIC ; SWEETHEART WRAP ;

{**2 Switches**} Sd L Xg ifo W to ½ LOP, -, fwd R, fwd L (*W fwd R, -, fwd L, fwd R*) ; Fwd R, -, fwd L to ½ OP LOD, fwd R (*W sd L Xg ifo M, fwd R to ½ OP, fwd L*) to ½ OP LOD ; {**Sd Basic**} Sd L, -, XRib (*W XLib*), rec L ; {**Sweetheart Wrap to LOD**} Sd R jnd trl hnds raisg ld hnds, -, XLib trng W to Wrap, rec R (*W sd L w/ jnd trl hnds raisg ld hnd, -, XRif comm LF trn under jnd ld hnds, rec L*) to Wrap Pos fcg LOD ;

13-16 SWEETHEART RUN TWICE to FACE ; ; lft Hnd PATTY CAKE ; rt Hnd PATTY CAKE & Pickg Up ;

{**Sweetheart Run x 2 to Fc**} [in Wrap Pos] Fwd L, -, R, L ; Fwd R, -, fwd & sd L trng to fc ptr, XRif (*W fwd R, -, L, R ; L, -, fwd & sd R trng to fc ptr, cl L*) Bfly WALL ; {**lft Hnd Patty Cake**} [jng lft hnds] Sd L, -, trng ¼ RF rk bk R extend trl arm to sd, rec L trng ¼ LF to fcg ptr (*W [jng lft hnds] sd R, -, trng RF rk fwd L extend ld arm to sd, rec R trng ¼ LF*) to BFLY WALL ; {**rt hnd Patty Cake & Pickg Up**} [w/ jnd rt hnds] Sd R, -, trng ¼ LF rk bk L to OP LOD extend ld arm to sd, rec R trng ¼ RF to fc ptr (*W [jng rt hnds] sd L, -, trng ¼ LF rk fwd R extend trl arm to sd, rec L trng ¼ RF to fc ptr*) to BFLY WALL & Pickg Up ;

PART B

01-04 START TRIPLE TRAVELER ; ; BOTH ROLL IN TO FACE ; BASIC ENDING :

{Start Triple Traveler} Fwd L trng LF & raisg jnd ld hnds to ld W into LF trn, -, fwd R, fwd L (*W bk R trng ¼ LF, -, sd L trng ½ LF undr jnd ld hnds, sd & fwd R contg trn to LOP LOD*); Fwd R spiral LF undr jnd ld hnds, -, fwd L, fwd R (*W fwd L, -, fwd R, fwd L*); **{Both Roll In to Fc}** Fwd L rlsng jnd hnds down & bk comm LF trn, fwd & sd R cont trng LF, cont LF trn sd & fwd L to fc COH (*W Fwd R, rlsng hnds comm RF trn, fwd & sd L cont RF trn, cont RF trn sd & fwd L to fc WALL*); **{Basic Ending}** Sd R, -, XLib (*W XRib*), rec R to BFLY COH ;

05-08 STROLLING VINE w/ HESITATION & INSIDE ROLL ; ; STROLLING VINE w/ HESITATION & OUTSIDE ROLL to P U ; ;

{Strolling Vine w/ Hesitation & Insd Roll} [SS- ; SQQ] Sd L, -, XRib (*W XLif w/ LF trn like a pick up*), swiv LF on R (*W Swiv RF on L*); Trng LF sd & fwd L raisg jnd ld hnds to ld W's LF trn, -, contg LF trn sd R, XLif (*W sd & bk R trng LF, -, contg to trn undr ld hnds roll LF L, R twd LOD*) to CP COH ; **{Strolling Vine w/ Hesitation & Outsd Roll}** [SS- ; SQQ] Sd R, -, XLib (*W XRif startg RF trn*), swiv RF on L (*W Swiv LF on R*); Trng RF sd & fwd R raisg jnd ld hnds to ld W's RF trn, -, contg RF trn, sd L, XRif (*W sd & bk L trng RF, -, contg to trn under ld hnds roll RF R, L twd LOD*) to BFLY COH & Pickg Up to RLOD ;

09-12 START TRIPLE TRAVELER ; ; BOTH ROLL IN TO FACE ; BASIC ENDING to Pickg Up in Low Bfly :

{Start Triple Traveler} Repeat meas 1,2 Part B ; ; **{Both Roll In to Fc}** Repeat meas 3 Part B ; **{Basic Ending}** Repeat meas 4 Part B to Low Bfly WALL & Pickg Up ;

13-14 TRAVELING X-CHASSE TWICE to FACE ; ;

{2 Traveling X-Chasse to Wall} In Low Bfly Trng LF fwd L twd LOD, -, w/ rt shldr ld sd & fwd R twd DLC, XLif (*W XRif*); Trng RF sd & fwd R twd LOD, -, w/ lft shldr ld sd & fwd L fcg WALL, XRif (*W XLif*) to ½ OP LOD ;

2^{de} & 3^{the} TIME

13-16 TRAVELING X-CHASSE ; PASSING X-CHASSE ; W PASSING X-CHASSE ; TRAVELING X-CHASSE to WALL & Pickg Up :

{Traveling X-Chasse} Repeat meas 13 Part B ; **{Passing X-Chasse}** Fwd R to LOD trng RF fc Wall, -, fwd & sd L cont RF trn, XRif ifo W fc DRW (*W bk L trng RF, -, small sd R fc COH, XLif*); **{W Passing X-Chasse}** Bk L trng RF, -, small sd R fc COH, XLif (*W fwd R trng RF, -, fwd & sd L cont RF trng, XRif of M fwd DRW*); **{Traveling X-Chasse to WALL & Pickg Up}** Trng RF sd & fwd R twd LOD, -, w/ lft shldr ld sd & fwd L fcg WALL, XRif (*W XLif*) to BFLY WALL & Pickg Up [2^{de} TIME to BFLY WALL] ;

PART C

01-04 TURN INTO ROMANTIC SWAY's & Pickg Up ; ; LEFT TURN w/ INSIDE ROLL ; BASIC ENDING :

{Trn Into Romantic Sway's & Pickg Up} [Release ld hnds] Sd L & swiv LF (*W RF*) to bk-to-bk sweep ld hnds up & around to end stretched out to sd at shldr level, -, hip rk sd R, hip rk rec L ; Sd R and swiv RF (*W LF*) to fc bring ld hds btwn ptrs to lead hip, -, hip rk sd L, hip rk cl R to Low Bfly WALL & Pickg Up ; **{Left Turn w/ Insd Roll}** Fwd L com LF trn raisg jnd ld hnds to ld W's LF trn, -, sd R compg ¼ LF trn, XLif (*W bk R com LF trn, -, sd L trng LF undr ld hnds, contg LF trn sd R*) to BFLY COH ; **{Basic Ending}** Repeat meas 4 Part B ;

05-08 TURN INTO ROMANTIC SWAY's & Pickg Up ; ; LEFT TURN w/ INSIDE ROLL ; BASIC ENDING & Manvr ;

{Trn Into Romantic Sway's & Pickg Up} Repeat meas 1,2 Part C to RLOD & Pickg Up ; ; **{Left Turn w/ Insd Roll}** Repeat meas 3 Part C ; **{Basic Ending}** Repeat meas 4 Part B to BFLY WALL & Maneuver ;

09-10 TRAVELING RIGHT TURN w/ ZIG ZAG to Pickg Up ; ;

{Traveling Right Turn to Zig Zag} Repeat meas 3,4 Part A to Pickg Up ; ;

ENDING

01-02 AIDA PREPARATION ; AIDA LINE & EXTEND ARMS :

{Aida Preparation} Fwd L trng LF (*W RF*) to OP LOD, -, thru R, trng RF (*W LF*) sd L fcg ptr ; **{Aida Line & Extend Arms}** Trng RF bk R to V-BK-TO-BK LOD, -, -, extend ld arms Up & Out ;