

MOON OVER NAPELS

Music: Tony Christie
www.amazon.de/
Time 3:32 Available from choreographer

Rhythm: Foxtrot **Phase:** IV+2 (Natural Weave + Bk Curved Feather)

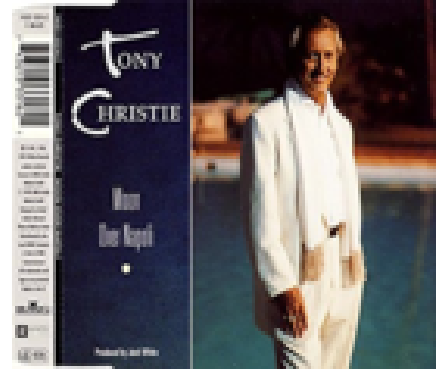
Footwork: Opposite except where (Noted)

Release Date: July 19

Choreo: Jos Dierickx Beverlosestwg 14b2 3583 Paal Belgium

Email: jos.dierickx@telenet.be

Sequence: INTRO AB AB INTER B ENDING



INTRO

01-04 CP DLC LEAD FOOT FREE WAIT 4 MEASURES ; ; ; ;
{Wait} CP DLC ld ft free wt 4 meas ; ; ; ;

05-08 OP REVERSE TURN ; HOVER CORTE ; BACK HOVER to SCP ; THRU FACE CLOSE ;
{OP Reverse Turn} Fwd L stg LF trn, -, sd R contg trn, bk L compg 3/8 LF trn (*W bk R stg LF trn, -, sd L cont trn, fwd R outsd ptr*) to BJO RLOD ; {Hover Corte} Bk R stg ½ LF trn, -, cont trn sd & fwd L rising & compg trn, rec R to BJO LOD ; {Bk Hover to SCP} Bk L, -, bk R risg sltly, rec L (*W fwd R, -, fwd & sd L trng RF risg & brushg R to L, contg RF trn sd & fwd R*) to SCP DLC ; {Thru Fc Cl} Thru R, -, sd L trng to fc ptr, cl R to CP WALL ;

PART A

01-04 HOVER ; NATURAL HOVER FALLAWAY ; CHECK BACK & REC to WHIPLASH BJO ; BACK BACK/LOCK BACK ;
{Hover} Fwd L, -, fwd & sd R rise to ball of ft, fwd L to SCP DLC ; {Nat Hover Fallaway} In SCP thruout fwd R, -, fwd L risg & trng RF, rec R (*W fwd L, -, fwd R, rec L*) to SCP DRW ; {Ck Bk & Rec to a Whiplash BJO} [SS-] Bk L in SCP ckg, -, rec R, pnt L to R to DRW trng body LF (*W bk R ckg, -, rec L swivel LF ronde R CCW,-*) to BJO DRW ; {Bk Bk/lk Bk} [SQ&Q] Bk L, -, bk R/lk Llf, bk R ;

05-08 IMPETUS to SCP ; THRU VINE 4 ; THRU SIDE BEHIND ; ROLL 3 to SCP ;
{Impetus to SCP} Bk L comm RF trn, -, cl R heel trn, fwd L (*W fwd R btw M's ft heel to toe pvt ½ RF, -, sd & fwd L cont trn arnd M brush R to L, fwd R*) to SCP LOD ; {Thru Vine 4} [QQQQ] Thru R (*W thru L*), sd L fcg ptr, XRib (*W XLib*), sd L to SCP LOD ; {Thru Sd Behind} Thru R, -, sd L, XRib (*W XLib*) to BFLY WALL ; {Roll 3 to SCP} [releasg both hnds] Start LF trn (*W RF*) sd & fwd L, -, small sd R cont LF trn, sd & fwd L cont LF trn to SCP LOD ;

09-12 PROMENADE WEAVE ; ; HOVER TELE to ½ OP ; START OP IN & OUT RUNS ;
{Promenade Weave} [SQQ;QQQQ] Fwd R, -, fwd L stg LF trn, contg trn sd & bk R (*W fwd L in pick up action, -, sd & bk R trng LF to CP, cont trng on R then fwd & sd L*) to BJO RLOD ; Bk L, bk R twd DLC trng LF to CP, sd & fwd L twd DLW, fwd R (*W Fwd R outside ptr, fwd L trng LF to CP, sd & bk R contg LF trn to fc COH, bk L*) to BJO DLW ; {Hover Tele} Fwd L, -, fwd & sd R rising & r-should lead 1/8 RF, sd & fwd L to ½ OP LOD ; {OP In & Out Runs} Fwd R comm RF trn, -, sd & fwd L ifo W contg trn, sd & fwd R to ½ LOP LOD w/tl-arms out to sd ;

13-16 FINISH OP IN & OUT RUNS ; CROSS HESITATION ; CLOSED IMPETUS ; FEATHER FINISH ;
{Finish OP In & Out Runs} Fwd L, -, R, L (*W fwd R comm RF trn, -, sd & fwd L ifo M contg trn, fwd & sd R*) to ½ OP DLC w/ ld-arms out to sd ; {Cross Hesitation} [S,-,-/SQQ] Fwd R, w/o chg wgt trn ¼ LF on ball of R ft, -, cont trng LF on ball of r-ft ckg, - (*W fwd L stg LF trn, -, sd R arnd M trng LF, contg LF trn cl L*) to BJO DRC ; {Closed Impetus} Commg RF upper bdy trn bk L, -, heel trn on L & cl R, sd & bk L (*W commg RF upper bdy trn fwd R btw M's ft, -, sd & fwd L contg RF trn arnd M, brush R to L & fwd R btw M's ft*) to CP DLW ; {Feather Finish} Bk R trn LF, -, sd & fwd L compg ¼ LF trn, fwd R outsd W to BJO DLC ;

PART B

01-04 TURN LEFT & R-CHASSE to BJO ; BACK CURVED FEATHER to DLC ; NATURAL WEAVE ; ;
{Trn Left & R Chasse to BJO} [SQ&Q] Fwd L trng LF, -, twd LOD & risg progly sd R/cl L, bk R BJO DRC ; {Bk Curved Feather to DLC} Bk R comm LF trn, -, bk L cont LF trn with lft-sd stretch, bk R cont LF trn (*W fwd L comm LF trn, -, fwd R outsd M, fwd L*) to BJO DLC ; {Natural Weave} [SQQ;QQQQ] Fwd R trng RF, -, sd L, bk R (*W fwd L, fwd R btwn M's feet, fwd L*) to BJO DRW ; Bk L, bk R in CP trng LF, cont LF trn sd L, fwd R to BJO DLW ;

05-08 THREE STEP ; OP NATURAL ; OVER SPIN TURN ; BOX FINISH WALL ;

{Three Step} Fwd L, -, sd & fwd R btwn W's ft, fwd L ; **{OP Natural}** Fwd R outsd W's feet trng RF, -, sd L twd Wall, bk R with r-shldr lead BJO (*W bk L, -, cls R heel turn, fwd L outside M to BJO*) ; **{Over Spin Turn}** Trng upper bdy RF bk L pvtg ½ RF & leavg R in frt, -, fwd R heel to toe btw W's ft contg RF trn, rec sd & bk L compg ¾ RF trn (*W trng upper bdy RF fwd R btw M's ft pvtg ½ RF, -, bk L contg trn & brush R to L, contg RF trn sd & fwd R*) to CP DRW ; **{Box Finish DLW}** Bk R, -, sd & bk L trng ¼ LF, cl R to CP DLW ;

09-12 STROLLING VINE w/ HESITATION & INSIDE ROLL ; ; STROLLING VINE w/ HESITATION & OUTSIDE ROLL ; ;

{Strolling Vine w/ Hesitation & Inside Roll} [SS-] Sd L, -, XRib (*WXLif*), swivel LF on R to DLW ; Sd & fwd L trng LF raising Id-hands, -, fwd R, cl L to fc COH (*W fwd R across LOD trng LF, -, roll LF under Id-hands L, R to fc ptr*) ; **{Strolling Vine w/ Hesitation & Outside Roll}** [SS-] Sd R, -, XLib (*WXRif*), swivel RF on L to DLC ; Sd & fwd R trng RF raising Id-hands, -, fwd L, cl R to fc WALL (*W fwd L across LOD trng RF, roll RF under Id-hands R, L to fc ptr*) ;

13-16 WHISK ; IN & OUT RUNS ; ; THRU FACE CLOSE ; [2^{de} TIME: SLOW SIDE LOCK]

{Whisk} Fwd L, -, sd & fwd R, XLib (*WXRif*) to SCP DLC ; **{In & Out Runs}** Trng RF fwd R, -, sd & bk L, bk R (*W fwd L, -, fwd R btwn M's ft, fwd L*) to BJO RLOD ; Trng RF bk L, -, contg trn fwd R btwn W's ft, sd & fwd L (*W trng RF fwd R, -, cont trn sd L ifo M, cont trn fwd & sd R*) to SCP DLC ; **{Thru Fc Cl}** Repeat meas 8 Intro ; **2^{de} TIME: {Slow sd Lock}** Thru R, -, fwd & sd L rising trng LF, cl R (*W thru L trng LF, -,sd R trng LF, XLif*) to CP DLC ;

INTER

01-04 DIAMOND TURN [OPTION INSIDE ROLL] ; ; ; ;

{Diamond Turn / OPTION W Inside Turns} Fwd L trng LF, -, compg ¼ LF trn sd R, bk L to BJO DRC ; Staying in BJO & trng LF bk R, -, compg ¼ LF trn sd L, fwd R (**Option W fwd L comm LF trn under Id-hands fc RDC, -, small sd R cont LF trn, small sd L compg LF trn**) to BJO DRW ; Repeat meas 1,2 Inter to BJO DLW & DLC ; ;

05-08 OP REVERSE TURN ; HOVER CORTE ; BACK HOVER to SCP ; CHAIR & SLIP ;

{OP Reverse Turn} Repeat meas 5 Intro ; **{Hover Corte}** Repeat meas 6 Intro ; **{Bk Hover to SCP}** Repeat meas 7 Intro ; **{Chair & Slip}** Ck thru R, -, rec L, trng LF bk R (*W ck thru L, -, rec R, swvlg LF on r-ft fwd L*) to CP DLC ;

ENDING

01-04 WHISK ; IN & OUT RUNS ; ; THRU & RISE to a CHAIR & HOLD ;

{Whisk} Repeat meas 13 Part B ; **{In & Out Runs}** Repeat meas 14,15 Part B ; ; **{Thru & Rise to a Chair & Hold}** [Q&Q] Fwd R/small fwd L w/ rise, strong fwd R lunge action bending knee, hold ;