

ROMAN D' AMOUR (LOVE NOVEL)

Music: Rose Room Orchestra
www.amazon.de/A Touch of Classic
Track # 3 Time 3:03
Available from choreographer

Rhythm: Foxtrot **Phase:** IV+1+1U (*Curved Feather + Box w/2 Way Underarm Turn*)

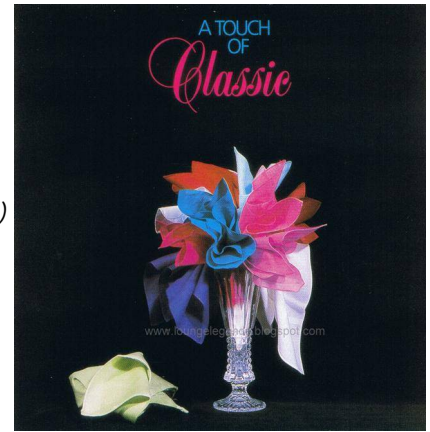
Footwork: Opposite except where (Noted)

Release Date: April 2016

Choreo : Jos Dierickx Beverlosestwg 14b2 3583 Paal Belgium

Email: jos.dierickx@telenet.be

Sequence: INTRO A B A(9-16) C A(1-15) END



INTRO

01-04 CP DLW LEAD FOOT FREE WAIT 4 MEASURES ; ; ; ;

{Wait} CP DLW ld ft free wt 4 meas ; ; ; ;

05-06 HOVER TELE ; SLOW SIDE LOCK ;

{Hover Tele} Fwd L, -, fwd & sd R rising & trng 1/8 RF, sd & fwd L to SCP LOD ; {Slow Sd Lk} Thru R, -, fwd & sd L rising trng LF, cl R (*W thru L trng LF, -,sd R trng LF, XLif*) to CP DLC ;

PART A

01-04 DIAMOND TURN HALF ; ; QUICK DIAMOND 4 ; DIP BACK & RECOVER ;

{Diamond Turn 1/2} Fwd L, -, trng ¼ LF sd R, bk L ; Bk R, -, trng ¼ LF sd L, fwd R to RDW ; {Ok Diamond 4} [QQQQ] Fwd L stg to trn LF, sd R contg LF trn, bk L compg 1/4 LF trn to BJO DLW, bk R to CP LOD ; {Dip Bk & Rec} [SS]Bk L w/ flexed knee, -, rec R to CP LOD, -;

05-08 TELEMARK to SCP ; HOVER FALLAWAY ; SLIP PIVOT ; FORWARD FACE CLOSE ;

{Telemark to SCP} Fwd L comm LF trn, -, sd R contg LF trn, sd & fwd L (*W bk R comm LF trn bringing L ft beside R w/ no wgt, -, cont trng LF on R heel & chg wgt to L, sd & sltly fwd R*) to SCP DLW ; {Hover Fallaway} Fwd R, -, fwd L risg & ckg, rec R to SCP DLW ; {Slip Pivot} Bk L, -, bk R trn LF keep L leg extended, fwd L (*W bk R stg LF pvt on ball of ft w/ thighs locked L leg extended, -, fwd L cont trn plc L near M's R ft, bk R*) to BJO DLW ; {Fwd Fc Cl} Fwd R, -, sd L trng to fc ptr, cl R to CP WALL ;

09-12 LEFT TURNING BOX HALF ; ; HOVER ; CURVED FEATHER CHKG ;

{Left Turng Box ½} Fwd L trn ¼ LF, -, sd R, cl L to LOD ; Bk R trn ¼ LF, -, sd L, cl R to CP COH ; {Hover} Fwd L, -, sd & fwd R risg to ball of ft & allowg W to brush R, fwd L to SCP RLOD ; {Curved Feather} Fwd R stg RF trn, -, cont RF trn sd & fwd L, cont upper bdy RF trn fwd R outsd W to BJO DLC & Chkg ;

13-16 THREE BACK CROSS HOVERS ; ; FEATHER FINISH ;

{3 Bk Cross Hovers} XLib (*W XRif*), -, sd & bk R rise, bk L to SCAR ; XRib (*W XLif*), -, sd & bk L rise, bk R BJO ; XLib (*W XRif*), -, sd & bk R rise, bk L to SCAR ; {Feather Finish} Bk R, -, bk & sd L trng ¼ LF, fwd R to BJO DLC ;

PART B

01-04 BOX w/ TWO WAY UNDERARM TURN to LOP RLOD ; ; ; ;

{Box w/ 2 Way Underarm Turn} Fwd L, sd R, cl L ; Raising ld hands Bk R, sd L, cl R (*W fwd L start CW circle under ld hnds, fwd R, fwd L*) ; Fwd L trng ¼ LF to COH, small sd R, cl L ahead W's r-shoulder (*W cont CW circle fwd R, fwd L, fwd R ahead M's r-shoulder*) to LOP COH ; [Still ld hnds together] Start RF trn fwd R ifo W, small sd L cont LF trn, cl R cont LF (*W fwd L comm LF trn under ld hnds, bk R cont LF trn, cl L*) sd by sd to LOP RLOD ;

05-08 CROSS HOVER to SCP ; THRU SIDE BEHIND ; TWISTY VINE 4 ; HOVER TELE to ½ OP ;

{Cross Hover to SCP} Fwd L comm LF trn, -, fwd & sd R stg rise to ball of ft to SCP LOD, fwd L (*W fwd R comm RF trn, -, fwd & sd L stg rise to ball of ft to SCP LOD, fwd R*) to SCP LOD ; {Thru Sd Behind} Thru R, -, sd L to fc prt, XRib (*W XLib*) ; {Twisty Vine 4} [QQQQ] Sd L, XRib (*W Xib*) trng RF to SCAR, sd L trng to fc ptr, XRif (*W Xif*) trng to BJO DLW ; {Hover Tele to ½ OP} Repeat meas 5 Intro to ½ OP LOD ;

09-12 OP IN & OUT RUNS TWICE ; ; ; ;

{OP In & Out Runs x 2} Fwd R comm RF trn, -, sd & fwd L in frt of W contg trn, sd & fwd R (*W fwd L, -, R, L*) to ½ LOP LOD w/trail arms out to sd ; Fwd L, -, R, L (*W fwd R comm RF trn, -, sd & fwd L in frt of M contg trn, fwd & sd R*) to ½ OP DLC w/ld arms out to sd ; Repeat meas 9,10 Part B ; ;

13-16 OP NATURAL ; BACK TWISTY VINE 4 ; CLOSED IMPETUS ; FEATHER FINISH ;

{OP Natural} Thru R comm RF trn, -, fwd & sd L cont RF trn to CP, bk R w/R sd lead (*W thru L, -, fwd R, fwd L*) to BJO ; **{Bk Twisty Vine 4}** (QQQQ) Bk L in BJO, sd R trng to SCAR, forward L in SCAR, sd & bk R trng to BJO ; **{Closed Impetus}** Commg RF upper bdy trn bk L, -, heel trn on L & cl R, sd & bk L (*W commg RF upper bdy trn fwd R btw M's ft, -, sd & fwd L contg RF trn arnd M, brush R to L & fwd R btw M's ft*) to CP DLW ; **{Feather Finish}** Repeat meas 16 Part A ;

17-20 REVERSE WAVE ; ; OVER SPIN TURN ; BOX FINISH to WALL ;

{Reverse Wave} Fwd L comm LF trn, -, sd R twd LOD trng LF (*W heel trn*), bk L to BJO DRC ; Bk R, -, bk L, bk R in CP fcg RLOD ; **{Over Spin Turn}** Trng upper bdy RF bk L pvtg ½ RF & leavg R in frt, -, fwd R heel to toe btw W's ft contg RF trn, rec sd & bk L compg ¾ RF trn (*W trng upper bdy RF fwd R btw M's ft pvtg ½ RF, -, bk L contg trn & brush R to L, contg RF trn sd & fwd R*) to CP DRW ; **{Box Finish to WALL}** Bk R, -, sd & bk L trng 1/8 LF, cl R to CP WALL ;

REPEAT PART A (9-16)

PART C

01-04 OP REVERSE TURN ; HOVER CORTE ; BACK HOVER to SCAR DRW ; BACK & CHASSE to SCP ;

{OP Reverse Turn} Fwd L stg LF trn, -, sd R contg trn, bk L compg 3/8 LF trn (*W bk R stg LF trn, -, sd L cont trn, fwd R outsd ptr*) to BJO RLOD ; **{Hover Corte}** Bk R stg ½ LF trn, -, cont trn sd & fwd L rising & compg trn, rec R to BJO LOD ; **{Bk Hover to SCAR DRW}** Bk L, -, bk R risg sltly comm RF trn, rec L cont RF trn (*W fwd R, -, fwd & sd L trng RF risg & brushg R to L, contg RF trn bk R*) to SCAR DRW ; **{Bk & Chasse to SCP}** [1,2&3] Bk R, -, trng LF chasse sd L/cl R, sd & fwd L (*W fwd L, -, sd R/cl L, sd & fwd L*) trng to SCP LOD ;

05-08 PROMENADE WEAVE ; ; DRAG HESITATION ; HESITATION CHANGE ;

{Promenade Weave } [SQO;QQQQ] Fwd R, -, fwd L stg LF trn, contg trn sd & bk R (*W fwd L in pick up action, -, sd & bk R trng LF to CP, cont trng on R then fwd & sd L*) to BJO LOD ; Bk L, bk R twd DLC trng LF to CP, sd & fwd L twd DLW, fwd R (*W Fwd R outside ptr, fwd L trng LF to CP, sd & bk R contg LF trn to fc COH, bk L*) to BJO DLW ; **{Drag Hesitation}** [S,S,-] Fwd L, -, stg LF trn sd R, contg LF trn draw L to BJO DRC ; **{Hesitation Chng}** [S,S,-] Trng upper bdy RF bk L, -, sd R contg RF trn, draw L to CP DLC ;

09-12 TELEMARK to SCP ; IN & OUT RUNS ; ; CHAIR & SLIP ;

{Telemark to SCP} Repeat meas 5 Part A ; **{In & Out Runs}** Trng RF fwd R, -, sd & bk L, bk R (*W fwd L, -, fwd R btwn M's ft, fwd L*) to BJO RLOD ; Trng RF bk L, -, contg trn fwd R btwn W's ft, sd & fwd L (*W trng RF fwd R, -, cont trn sd L in frt of M, cont trn fwd & sd R*) to SCP DLC ; **{Chair & Slip}** Ck thru R, -, rec L, trng LF bk R (*W ck thru L, -, rec R, swvlg LF on R fwd L*) to CP DLC ;

13-16 REVERSE TURN ; ; HOVER TELE ; SLOW SIDE LOCK ;

{Reverse Turn} Fwd L twd DLC comm LF turn, -, sd R around ptr, bk L twds LOD (*W Bk R comm LF trn, -, cl L [heel turn], fwd R btw M's ft*) ; Bk R cont LF trn, -, sd & fwd L cont trn, fwd outsd ptr (*W Fwd L cont LF trn, -, sd & bk R, bk L*) to BJO DLW ; **{Hover Tele}** Repeat meas 5 Intro ; **{Slow Sd Lock}** Repeat meas 6 Intro ;

REPEAT PART A(1-15)

ENDING

01-02 BACK HALF BOX ; DIP BACK & HOLD ;

{Bk 1/2 Box} Bk R, -, sd L trng to LOD, cl R to CP LOD ; **{Dip Bk & Hold}** [S] Bk L w/ flexed knee, -, -, - ;