

THE SUNSHINE OF YOUR SMILE

Music: Carmel Silver

<https://sharphemusic.com/product/carmel-silver-the-sunshine-of-your-smile-cd/>

Time 3:32 Slow Down w/ -7 % to Time 3:07 Cut from 2:12 to 2:48,5

Available from choreographer

Rhythm: Foxtrot Phase: 4+2 (Natural Weave + Curved Feather)

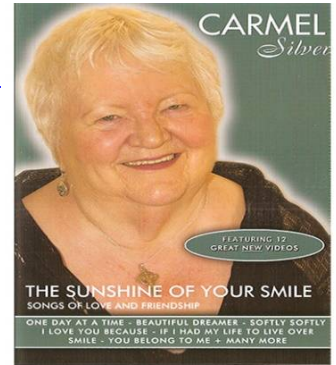
Footwork: Opposite except where (Noted)

Release Date: Oct 21

Choreo: Jos Dierickx Beverlosestwg 14b2 3583 Paal Belgium

E-mail: jos.dierickx@telenet.be

Sequence: INTRO AB BRIDGE 1 AB BRIDGE 2 B(13-16) BRIDGE 1(1-2) END



INTRO

01-04 BFLY WALL LEAD FOOT FREE WAIT 4 MEASURES ; ; ; ;

{Wait} BFLY WALL ld ft free wt 4 meas ; ; ; ;

05-08 TWIRL/VINE 3 ; PICK UP to SCAR ; FORWARD CHECK/W DEVELOPE ; FEATHER FINISH ;

{Twirl/Vine 3} Raisg ld hnds sd L, -, XRib, sd L (*W full RF trn undr jnd ld hnds fwd R, -, sd & bk L, fwd R*) to SCP LOD ; {Pick Up to SCAR} Sm fwd R Idg W to fold in frt (*W trng LF fwd L foldg ifo M*), -, sd L, cl R swiv to SCAR DLW ; {Fwd Checkg/W Develope} [S] Fwd L outsd W chckg, -, -, - (*W bk R, -, bring L ft up R leg to insd of R knee, xtnl L ft fwd*) ; {Feather Finish} Bk R trn LF, -, sd & fwd L, fwd R outsd W XRif (*W fwd L trn LF, -, sd & bk R, bk L XLib*) to BJO DLC ;

PART A

01-04 REVERSE WAVE ; ; TWO RIGHT TURNS to DLW ; ;

{Reverse Wave} Fwd L comm LF trn, -, sd R twd LOD trng LF (*W heel trn*), bk L to BJO DRC ; Bk R, -, bk L, bk R in CP fcg RLOD ; {2 Right Trns} Bk L strt RF trn, -, cont RF trn sd R, cl L ; Cont RF trn fwd R, -, sd L, cl R to CP DLW ;

05-08 HOVER TELE ; PROMENADE WEAVE ; ; CHANGE of DIRECTION ;

{Hover Tele} Fwd L, -, fwd R risg & lft shldr lead, sd & fwd L to SCP LOD ; {Promenade Weave} [SQQ:QQQQ] Fwd R, -, fwd L stg LF trn, contg trn sd & bk R (*W fwd L in pick up action, -, sd & bk R trng LF to CP, cont trng on R then fwd & sd L*) to BJO RLOD ; Bk L, bk R twd DLC trng LF to CP, sd & fwd L twd DLW, fwd R (*W fwd R outsd ptr, fwd L trng LF to CP, sd & bk R contg LF trn to fc COH, bk L*) to BJO DLW ; {Chng of Direction} [SS] Fwd L, -, fwd & sd R trng ¼ LF, draw L to CP DLC ;

09-12 OP REVERSE TURN ; HOVER CORTE ; BACK TWISTY VINE 4 ; BACK HOVER to SCP ;

{OP Reverse Trn} Fwd L stg LF trn, -, sd R contg trn, bk L compg 3/8 LF trn (*W bk R stg LF trn, -, sd L cont trn, fwd R outsd ptr*) to BJO RLOD ; {Hover Corte} Bk R stg ½ LF trn, -, cont trn sd & fwd L risg & compg trn, rec R to BJO DLW ; {Bk Twisty Vine 4} (QQQQ) Bk L trng slightly RF, sd R to Coh, XLif to Scar, trng ¼ LF sd & bk R (*W fwd R trg RF, sd & bk L, cont trng XRib, sd & fwd L to BJO*) to BJO DLW ; {Bk Hover to SCP} Bk L, -, bk R risg sltly, rec L (*W fwd R, -, fwd & sd L trng RF risg & brushg R to L, contg RF trn sd & fwd R*) to SCP DLC ;

13-17 CURVED FEATHER ; QUICK DBL OUTSIDE SWIVEL ; WEAVE ENDING ; DRAG HESITATION ; HESITATION CHANGE ;

{Curved Feather} Fwd R stg RF trn, -, contg RF trn sd & fwd L, contg upper bdy RF trn fwd R outsd W (*W fwd L stg slight RF trn, -, sd & bk R cont trn, bk L*) to BJO DRW ; {Quick DBL Outsd Swivel} [SS] Bk L Xg Rif w/ no wgt, -, fwd R (*W fwd R & swvl ½ RF to SCP DRC, -, fwd L & swvl ½ LF*) to BJO DRW, - ; {Weave Ending} Repeat meas 7 Part A ; {Drag Hesitation} [SS] Fwd L, -, stg LF trn sd R, contg LF trn draw L to BJO DRC ; {Hesitation Chng} [SS] Trng upper bdy RF bk L, -, sd R contg RF trn, draw L to CP DLC ;

PART B

01-04 DIAMOND TURN HALF ; ; QUICK DIAMOND FOUR ; DIP BACK & RECOVER ;

{Diamond Trn 1/2} Fwd L, -, trng ¼ LF sd R, bkL ; Bk R, -, trng ¼ LF sd L, fwd R to RDW ; {Qk Diamond 4} QQQQ] Fwd L stg to trn LF, sd R contg LF trn, bk L compg ¼ LF trn to BJO DLW, bk R to CP LOD ; {Dip Bk & Rec} [SS] Bk L w/ flexed knee, -, rec R to CP LOD, - ;

05-08 TELEMARK to SCP ; NATURAL WEAVE ; ; DRAG HESITATION ;

{Telemark to SCP} Fwd L comm LF trn, -, sd R contg LF trn, sd & fwd L (*W bk R comm LF trn bringing L ft beside R w/ no wgt, -, cont trng LF on R heel & chg wgt to L, sd & sltly fwd R*) to SCP DLW ; {Natural Weave} [SQQ:QQQQ] Fwd R trng RF, -, sd L, bk R (*W fwd L, fwd R btwn M's ft, fwd L*) to BJO DRW ; Bk L, bk R in CP trng LF, cont LF trn sd L, fwd R to BJO DLW ; {Drag Hesitation} Repeat meas 16 Part A ;

09-12 BACK HOVER TELE ; IN & OUT RUNS ; ; PICK UP to CP LOD ;

{Bk Hover Tele} Bk L comm RF trn, -, sd & fwd R cont trn & hover, sd & fwd L small step on toe (*W fwd R w/ RF trn, -, sd & fwd L cont trn & hover, sd & fwd R on toe*) to SCP LOD ; **{In & Out Runs}** Trng RF fwd R, -, sd & bk L, bk R (*W fwd L, -, fwd R btwn M's ft, fwd L*) to BJO RLOD ; Trng RF bk L, -, contg trn fwd R btwn W's ft, sd & fwd L (*W trng RF fwd R, -, cont trn sd L ifo M, cont trn fwd & sd R*) to SCP DLC ; **{Pick Up Sd Cl}** Repeat meas 6 Intro to CP LOD ;

13-16 THREE STEP ; MANEUVER ; SPIN TURN ; HALF BACK BOX to SCAR DLW [3rd TIME: to LOD] ;

{Three Step} Fwd L, -, sd & fwd R btwn W's ft, fwd L ; **{Maneuver}** Fwd R trng RF, -, sd L, cl R (*W bk L trng RF, -, sd R, cl L*) to CP RLOD ; **{Spin Trn}** Begin RF upper body trn bk L toeing in pivot ½ RF, -, cont trn fwd R betw W's ft, rec sd & bk L (*W begin RF upper body trn fwd R heel to toe betw M's ft pivot ½ RF, -, cont trn bk on L toe, fwd R*) to CP DLW ; **{Bk ½ Box to SCAR}** Bk R, -, sd L, cl R swiv to SCAR DLW [3rd TIME: to LOD] ;

BRIDGE 1

01-03 FORWARD CHECKG/W DEVELOPE ; ROCK BACK & FORWARD CHECKG ; FEATHER FINISH ;

{Fwd Checkg/W Develope} Repeat meas 7 Intro ; **{Rock Bk & Fwd Checkg}** [SS] Rk bk R, -, rk fwd L checkg, - ; **{Feather Finish}** Repeat meas 8 Intro ;

BRIDGE 2

01 CHANGE of DIRECTION ;

{Chng of Direction} Repeat meas 8 Part A ;

ENDING

01 BACK & DIP BACK ;

{Bk & Dip Bk} [SS] Bk R, -, Dip bk L w/ knee relaxed (*W dip fwd R w/ knee relaxed*), -,- ;