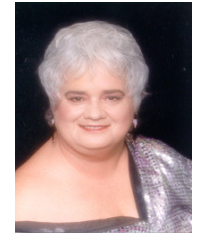


TIME, TIME



Record: **Time, Time**

Music By: **Ed Ames**

Choreographer: **Penny Lewis,**

1301-H Leon Street, Durham, NC 27705

rndancer@peoplepc.com (NOTE: I added spaces so the address is readable)

Rhythm: **Waltz**

Phase: **IV**

Footwork: **Opposite Unless noted***

Sequence: **Intro, A, B, A, B, A (modified), ENDING**

Download Wal Mart - \$.94

INTRO

01-04 Wait Intro Notes (CDC) ;

(01) In closed position diag center wait just the intro notes – begin dance on the word TIME ;

A

01-04 Diamond Turns ;;;

(01-02) Step Fwd DC beginning L turn on L, Step Side on R, Step Bk on L crossing behind R (*Bjo*) - step Bk on R, Step side on L, Step Fwd on R crossing in front of L ;; (03-04) Repeat 01-02 to C-LOD ;

05-08 Fwd Waltz ; Fwd & Drift ; Twinkle Out ; Thru, Fc, Close DC ;

(05) Step Fwd, small side and fwd, close (*Lady - step bk, side and bk moving, close*) ; (06) Small Step Fwd, fwd & side, close (*Lady – Step bk, bk & side , close putting a little distance between partner*) ; (07) Cross lead ft in front of trailing foot toward wall, fwd turning in to face partner, turning to face COH step fwd ; (08) Step thru to COH on trailing foot, step fwd turning to face partner, close and change eight to CDC ;

09-12 Diamond Turns ;;;

(09-12) Repeat meas 1-4 part A

13-16 2 L Turns CW ;; Box (SdCr) ;;

(13-14) Step Fwd DC beginning L turn on L, Step Side on R, Step Bk on L – Step bk on R continuing L turn, side on L, step slightly bk on R finishing L turn to CW ;; (15-16) Step Fwd on L, fwd & side R, close L to R - Step Bk on R, bk & side on L, close R to L ending in SdCr ;; {3rd time Box ends in CW}

B

01-04 Twinkle Bjo ; Fwd Lady Develope ; Outside Swivel Semi ; Pick Up, Side, Close CDC ;

(01) Cross lead ft in front of trailing foot toward RLOD, fwd & slightly side turning in to face partner, fwd turning to face LOD in Bjo ; (02) Step Fwd & hold (*Lady - step Bk on L, bring R leg up along partner's R leg and slowly back down {up & down = 2 Beats of music}*) ; (03) Step Bk (*Lady – step fwd on R turning R to face LOD in Semi – L foot free*) ; (04) Fwd, fwd & side, close (*Lady – fwd, fwd & slightly side turning L to face partner, close*) ;

05-08 Rev Wave ;; Impetus Semi RLOD ; Thru, Fc, Close ;

(05-06) Fwd turning L, fwd and side, small fwd – Bk, bk & side, small bk CB ;; (07) Step bk, close heels and turn to face LOD, step fwd on lead to Semi (*Lady – step fwd around partner turning R, side step continuing turn to face RLOD, step fwd*) ; (08) Step thru, fwd & side to face partner, close trailing foot beside lead and change weight ;

09-12 Sway L & R ;; Canter 2X ;; Fwd – Lady Develop ;

(09-10) In closed position slowly sway bodies L and R ;; (11-12) Side step to LOD, draw trailing foot to lead and change weight – Repeat ;;

13-16 Waltz Away ; Wrap ; Fwd Waltz ; Pk Up DC ;

(03) Step Fwd DC L, Step Side on R, Close L (*Lady – will turn slightly toward wall*) ; (14) Small fwd step, small fwd and slightly side step, close (*Lady – fwd turning L, fwd continuing L turn, small fwd to end facing LOD*) ; (15) Fwd, fwd & side, close ; (16) Fwd, fwd & side, close (*Lady – fwd, fwd & slightly side turning L to face partner, close*) ;

ENDING

01-02 Twisty Vine 3 ; Fwd, Fc, Cl ; Canter ;

(01) Side step toward LOD on L, cross R behind L turning slightly to face Diagonal RLOD, step side and fwd on L turning to face LOD in Banjo position R (*Lady – side step toward LOD on R, cross L in front of R stepping fwd to face LOD, step fwd turning to face RLOD in Banjo*) ; (02) Step fwd toward LOD, step fwd turning to face partner, close trailing foot beside lead foot ; (03) **Repeat directions for meas 11 part B ;**

03-05 Twirl Vine Semi ; Thru to Prom Sway ; Chg Sway & Hold ;

(03) Side step toward LOD on L raising lead hands, cross R behind L turning slightly to face Diagonal RLOD, step side & fwd (*Lady – step toward LOD under raised lead hands beginning full R Turn, fwd, fwd completing small R circle*) ; (04) Step thru toward LOD, step fwd & side to face in closed position while extending joined lead hands, point trailing foot to RLOD ; (5) Change upper body tilt slightly to RLOD and look to RLOD ;

.....
HEAD CUES: TIME, TIME P- IV

INTRO

Wait lead notes (*CDC*) begin dance on “TIME” ;

A

Diamond Turns ;;; Fwd Waltz ; Fwd & Drift ;

Twinkle ; Thru, Fc, Cl (*DC*) ;

Diamond Truns ;;; 2 L Turns (*CW*) ;;

Box (*SdCr*) ;;

B

Twinkle Bjo ; Fwd – Lady Develope ;

Outside Swivel Semi ; PkUpSd, Cl (*DC*) ;

Reverse Wave ;; Impetus Semi ; Thru, Fc, Cl ;

Sway L & R ;; Canter Twice ;;

Waltz Away ; Wrap ; Fwd Waltz ; PkUp, Sd, Cl (*DC*) ;

A

Diamond Turns ;;; Fwd Waltz ; Fwd & Drift ;

Twinkle ; Thru, Fc, Cl (*DC*) ;

Diamond Truns ;;; 2 L Turns (*CW*) ;;

Box (*SdCr*) ;;

B

Twinkle Bjo ; Fwd – Lady Develope ;

Outside Swivel Semi ; PkUpSd, Cl (*DC*) ;

Reverse Wave ;; Impetus Semi ; Thru, Fc, Cl ;

Sway L & R ;; Canter Twice ;;

Waltz Away ; Wrap ; Fwd Waltz ; PkUp, Sd, Cl (*DC*) ;

A

Diamond Turns ;;; Fwd Waltz ; Fwd & Drift ;

Twinkle ; Thru, Fc, Cl (*DC*) ;

Diamond Truns ;;; 2 L Turns (*CW*) ;;

Box ;;

ENDING

Twisty Vine 3 ; Fwd, Fc, Cl ; Canter ;

Twirl Vine ; Thru to Prom Sway ; Chg of Sway & Hold ;