

# WALTZ OF LOVE - WALTZER DER LIEBE 4

Music: Mireille Mathieu

[www.amazon.com/bonjour Mireille](http://www.amazon.com/bonjour Mireille)

Track # 12 Time 3:30 Shortened cut from 40,9 to 115,32 to Time 3:14

Available from choreographer

Rhythm: Waltz Phase IV

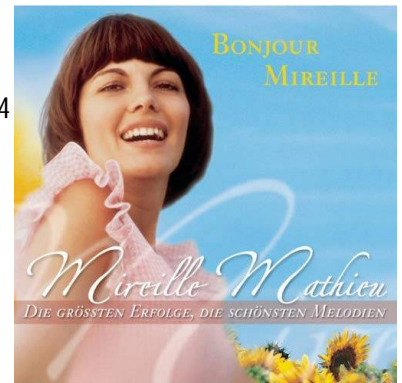
Footwork: Opposite except where (Noted)

Release Date: Jan 19

Choreo: Jos Dierickx Beverlosestwg 14b2 3583 Paal Belgium

E-mail: [jos.dierickx@telenet.be](mailto:jos.dierickx@telenet.be)

Sequence: INTRO AB AB B END



## INTRO

### 01-04 BFLY POS WALL LEAD FOOT FREE WAIT 2 MEASURES ; ; TWIRL VINE 3 ; SLOW SIDE LOCK ;

{Wait} BFLY POS WALL Id ft free wt 2 meas ; ; {Twirl/Vine 3} Sd L, XRib, sd L (W full RF trn undr jnd Id hnds fwd R, sd & bk L, fwd R) to SCP LOD ; {Slow Sd Lk} Thru R, fwd & sd L rising trng LF, cl R (W Thru L trng LF, sd R trng LF, lk Lif) to CP DLC ;

## PART A

### 01-04 VIENNESE TURNS ; ; HOVER TELE ; THRU SYNCOPATED VINE ;

{Viennese Turns} Fwd L stg LF trn, sd R cont trn, XLif to fc RLOD (W bk R stg LF trn, sd L cont trn, cl R) ; Bk R cont LF trn, sd L cont trn, cl R (W fwd L cont LF trn, sd R cont trn, XLif) to CP DLW ; {Hover Tele} Fwd L, fwd R rising & trng 1/8 RF, sd & fwd L to SCP LOD ; {Thru Syncop Vine} [12&3] Thru R, sd L/XRib (W XLib), sd L to SCP LOD ;

### 05-08 WEAVE 6 to BJO ; ; OP NATURAL ; HESITATION CHANGE ;

{Weave 6 to BJO} Fwd R DLC, fwd L stg LF trn, contg trn sd & bk R to fc DRC (W fwd L trng LF, sd & bk R to CP, contg LF trn sd & fwd L LOD to BJO) ; Bk L LOD, bk R trng LF trn, sd & fwd L (W fwd R outsd ptr, fwd L to CP contg LF trn, sd & bk R) to BJO DLW ; {OP Natural} Fwd R stg RF trn, cont trn sd & bk L, bk R w/ R sd Id (W bk L trng RF, fwd R btwn man's feet, fwd L) to BJO DRC ; {Hesitation Chng} [12-] Trng upper bdy RF bk L, sd R contg RF trn, draw L to CP DLC ;

### 09-12 TURN LEFT & r-CHASSE to BJO ; BACK HOVER TELE to ½ OP ; OP IN & OUT RUNS ; ;

{Turn Left & r-Chasse to BJO} [12&3] Fwd L comm LF trn, cont trng LF sd R/cl L, sd & bk R to BJO DRC ; {Bk Hover Tele} Bk L DW comm RF trn, sd & fwd R DW btwn ptr's ft cont RF trn to fc DLW brushing L to R and rising, sd & fwd L (W fwd R DLW outsd M comm to trn RF, sd L Wall cont RF trn brushing R to L and rising, sd & fwd R) to SCP DLC ; {OP In & Out Runs} Fwd R begin RF trn, sd & fwd L Xifo W cont trn, sd & fwd R to ½ LOP LOD w/ free arms out to sd (W fwd R, L, R) ; Fwd L, R, L (W fwd R begin RF trn, sd & fwd L Xifo M cont trn, fwd & sd R) to ½ OP LOD w/ free arms out to sd ;

### 13-16 THRU CHASSE to BJO ; OP NATURAL ; SPIN TURN ; BOX FINISH ;

{Thru Chasse to BJO} [12&3] Thru R, sd to fc prt L/cl R, sd & fwd L (W trng LF, sd R/cl L, sd & bk R) to BJO LOD ; {OP Natural} Repeat meas 7 Part A ; {Spin Turn} Stg RF upper bdy trn bk L pvtg ½ RF to fc LOD, fwd R btwn W's ft heel to toe cont trn leavg L leg xtnd bk & sd, rec L (W stg RF upper bdy trn fwd R btwn M's ft heel to toe pvtg ½ RF, bk L cont trn brush R to L, fwd R btwn M's ft) to CP DLW ; {Box Finish} Bk R, sd & bk L trng ¼ LF, cl R to CP DLC ;

## PART B

### 01-04 DIAMOND TURN ; ; ; ;

{Diamond Turn} Fwd L trng LF, compg ¼ LF trn sd R, bk L to BJO DRC ; Staying in BJO & trng LF bk R, compg ¼ LF trn sd L, fwd R to BJO DRW ; Repeat meas 1,2 Part B to BJO DLW & DLC ; ;

**05-08 OP REVERSE TURN ; HOVER CORTE ; BACK & CHASSE to SCAR ; CROSS SWIVEL to BJO DLW /W DEVELOPE ;**  
**{OP Reverse Turn}** Fwd L com LF trn, trng LF sd R, bk L compg 3/8 LF trn (*W bk R comm LF trn, cl L [heel trn], fwd R outsd ptr*) to BJO RLOD ; **{Hover Corte}** Bk R, trng LF sd & fwd L LOD leavg R leg ipl, compg ½ LF trn rec R (*W fwd L, trng LF sd & fwd R & brush L to R, fwd L*) to BJO DLW ; **{Bk & Chasse to SCAR DRW}** [12&3] Trn RF bk L cp DRC shape to lft, sd R/cl L trn RF, fwd R DRW lose shape pvt RF to SCAR DRW ; **{Cross Swivel to Bjo/W Develope}** [1--] Fwd L outsd ptr/swvlg on L foot LF DLW, pt R sd & bk RLOD, hold shaping twd W (*W bk R/swvlg LF on R foot to fc DRC, bring L foot [w/ toe pointed down] up R leg to insd of R knee, extend L foot fwd*) to BJO DLW ;

**09-12 OP NATURAL ; BACK BACK/LOCK BACK ; IMPETUS to SCP ; CHAIR & SLIP ;**  
**{OP Natural}** Repeat meas 7 Part A ; **{Bk Bk/Lk Bk}** (12&3) Bk L, bk R/lk Lf, bk R to BJO ; **{Impetus to SCP}** Bk L w/ RF bdy trn, cl R [heel trn] contg RF trn, fwd L (*W fwd R outsd ptr pvtg RF, sd & fwd L contg RF trn arnd M, brush R & fwd R*) to SCP DLC ; **{Chair & Slip}** Ck fwd R w/bent knee, rec L w/ slight LF trn, sm bk R (*W ck fwd L, rec R swvlg 5/8 LF, fwd L*) to CP DLC ;

**13-16 TELEMARK to SCP ; MANEUVER & PIVOT 2 ; PIVOT 3 to SCP ; SLOW SIDE LOCK ;**  
**{Telemark to SCP}** Fwd L comm LF trn, sd R w/ a strong LF trn, sd & slightly fwd L (*W bk R comm LF trn, cl L [heel trn], sd & slightly fwd R*) to SCP DLW ; **{Manuver & Pivot 2}** Fwd R strt trn RF, trn ½ RF sd L pvt action, fwd R pvt ½ RF ; **{Pivot 3 to SCP}** Bk L pivot ½ RF, fwd R heel lead btwn W's feet cont RF trn rise & stretch R sd, sd & fwd L to SCP LOD ; **{Slow Sd Lk}** Thru R, fwd & sd L rising trng LF, cl R (*W Thru L trng LF, sd R trng LF, lk Lf*) to CP DLC ;

## ENDING

**01-05 TELEMARK to SCP ; MANEUVER & PIVOT 2 ; PIVOT 3 to SCP ; THRU CHASSE to BJO ;**  
**FORWARD/W DEVELOPE & HOLD ;**  
**{Telemark to SCP}** Repeat meas 13 Part B ; **{Manuver & Pivot 2}** [slow down] Repeat meas 14 Part B ; **{Pivot 3 to SCP}** [slow down] Repeat meas 15 Part B ; **{Thru Chasse to BJO}** Repeat meas 13 Part A ; **{Fwd Ck/W Develope}** [1--] Fwd R out r-sd W, -, - (*W bk L, bring R ft up L leg to insd of L knee, extend R ft fwd*) to BJO DLW ;